

# StoneGate™ Authentication Server



## Human-to-Cloud secure authentication experience

A new era of ergonomic, human-centric authentication is here. Meet the StoneGate Authentication Server with ergonomic Multi-Method Authentication (MobileID & SMS-based authentication) and dynamic, automated user-linking.

StoneGate Authentication Server gives you authenticated access to the cloud — the way you want, on the devices you want.

Surprisingly quick to deploy, the Server offers unrivalled ease of governance through the groundbreaking StoneGate Management Center.

Human-centric Authentication supports mobile devices. Because smartphones and tablets are what people carry with them. There is no need to invest in hardware tokens, or in training key employees to use them.

As a seamlessly integrated part of the ergonomic and powerful StoneGate Management Center, the Authentication Server offers ease of configuration and use, as well as minimized TCO/TCA and enhanced reporting.

StoneGate Authentication Server is a part of the StoneGate Authentication Solution. For the ultimate secure access to the cloud, the full solution can become a powerful identity provider for your Federated Authentication needs.

# STONESOFT

Secure Information Flow

# StoneGate™ Authentication Server Specifications

## Highlights

### SPECIFICATIONS

Max number of Authentication Server clusters per SMC	1
Max number of named users	100000
Authentication protocol	Radius

### FEATURES

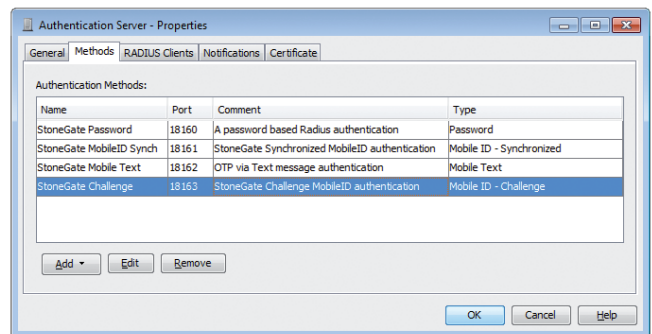
Cluster configuration	The system can be configured in mirrored pair to provide high availability with synchronization of authentication information.
Automatic User Linking	In case of existing user repositories, users can be automatically linked and configured with appropriate authentication methods.
Transparent integration with backend user databases	StoneGate Authentication Server integrates transparently with user databases such as MS Active Directory, Novell eDirectory or other LDAP V3 compliant systems to allow manual or automatic user linking
Authentication Methods included	StoneGate Password StoneGate MobileID Synchronized StoneGate MobileID Challenge StoneGate Mobile Text
Federated ID	StoneGate Authentication Server can be configured as Identity Provider (IdP) in a Federated ID scenario based on SAML or ADFS protocols
Notification channels	Notification of information such as One Time Password (OTP) and seeds for MobileID authentication methods can be sent via mail or text message gateways

### SUPPORT

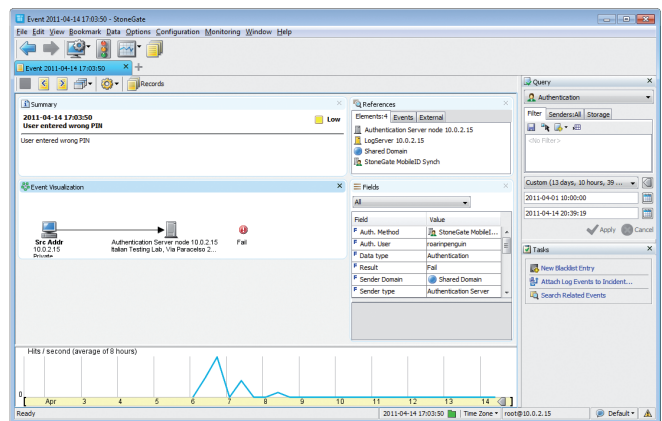
Premium	24/7 support. Web, email and phone. Full call logging. Two hour response time. Full software updates.
Basic	8/5 support web, email and phone. Full call logging.

### PRODUCT CODES

LIC-SG-AUTH-SRV	StoneGate Authentication Server base license. Includes 25 named users and 5 radius clients
LIC-SG-AUTH-SRV-X (replace "X" with 25-100-1000-10000)	Additional "X" named users for StoneGate Authentication Server
LIC-SG-AUTH-SRV-RAD-100	Additional 100 Radius client for StoneGate Authentication Server
FP-AUTH-FEDID	Feature pack for Federation ID
LIC-SG-AUTH-SRV-HA	Second node of a mirrored pair

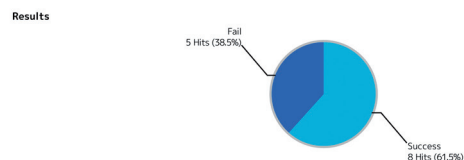


Easily and ergonomically configure multiple authentication methods. StoneGate Authentication provides flexible and rapid deployment in both new and current environments.



Easily see each authentication event with just a few clicks. Dynamic log filtering and browsing allows you to easily drill down to find what you need.

StoneGate™ StoneGate Authentication Server Report, 2011-04-19 10:45:00 - 2011-04-19 11:15:00 3 / 3  
Top Sources - Geolocalized



Powerful, geotagged reporting shows you the where, what and how of Authentication requests and results.